



February 9, 2017

Hopkins County Judge
The Honorable Robert Newsom
PO Box 288
Sulphur Springs, Texas 75483

Farmers Electric Cooperative Member: Benjamin Arnold
Service Order Number: 1604002554

The Honorable Judge Newsom,

Farmers Electric Cooperative, Inc. is requesting permission to install electrical power distribution facilities across CR 1186 which is located approximately 104' north of CR 1189 in Hopkins County, Texas. This will provide new service to Mr. Benjamin Arnold.

Site location map and construction sketches are enclosed. The construction sketch details the proposed work. All road crossing will have a minimum vertical clearance of 22 feet.

If you have any questions, please contact field engineering representative Josh Ede at 903-268-6873.

Sincerely,
Josh Eden
Engineering Assistant
jeden@farmerselectric.coop

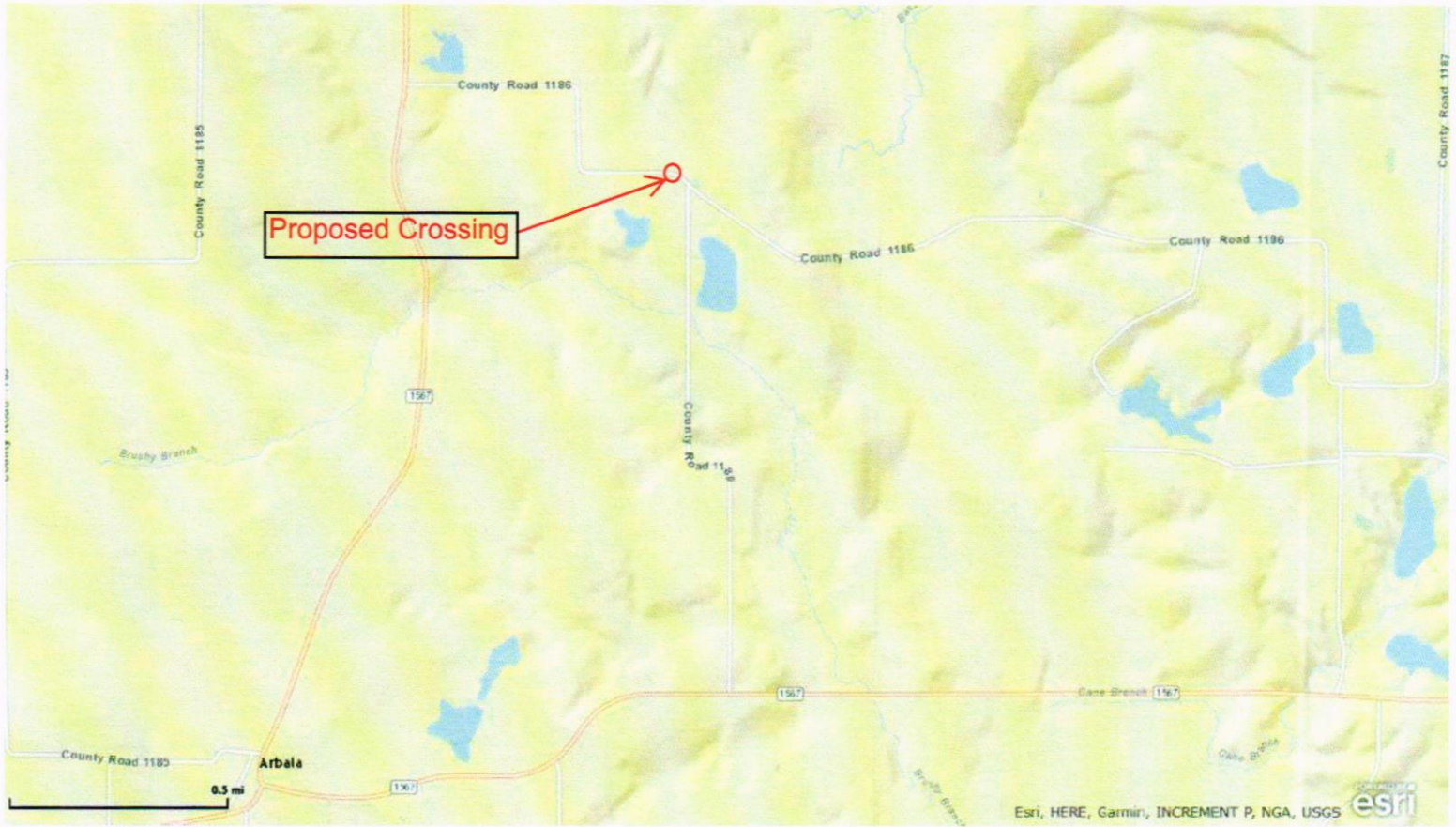
Enclosures

Cc: Hopkins County Commissioner Pct. 2. Mike Odell

Submitted by:
Damaris Rivera
Field Engineering Coordinator
Office 903-453-0724 Fax 903-453-0764
drivera@farmerselectric.coop

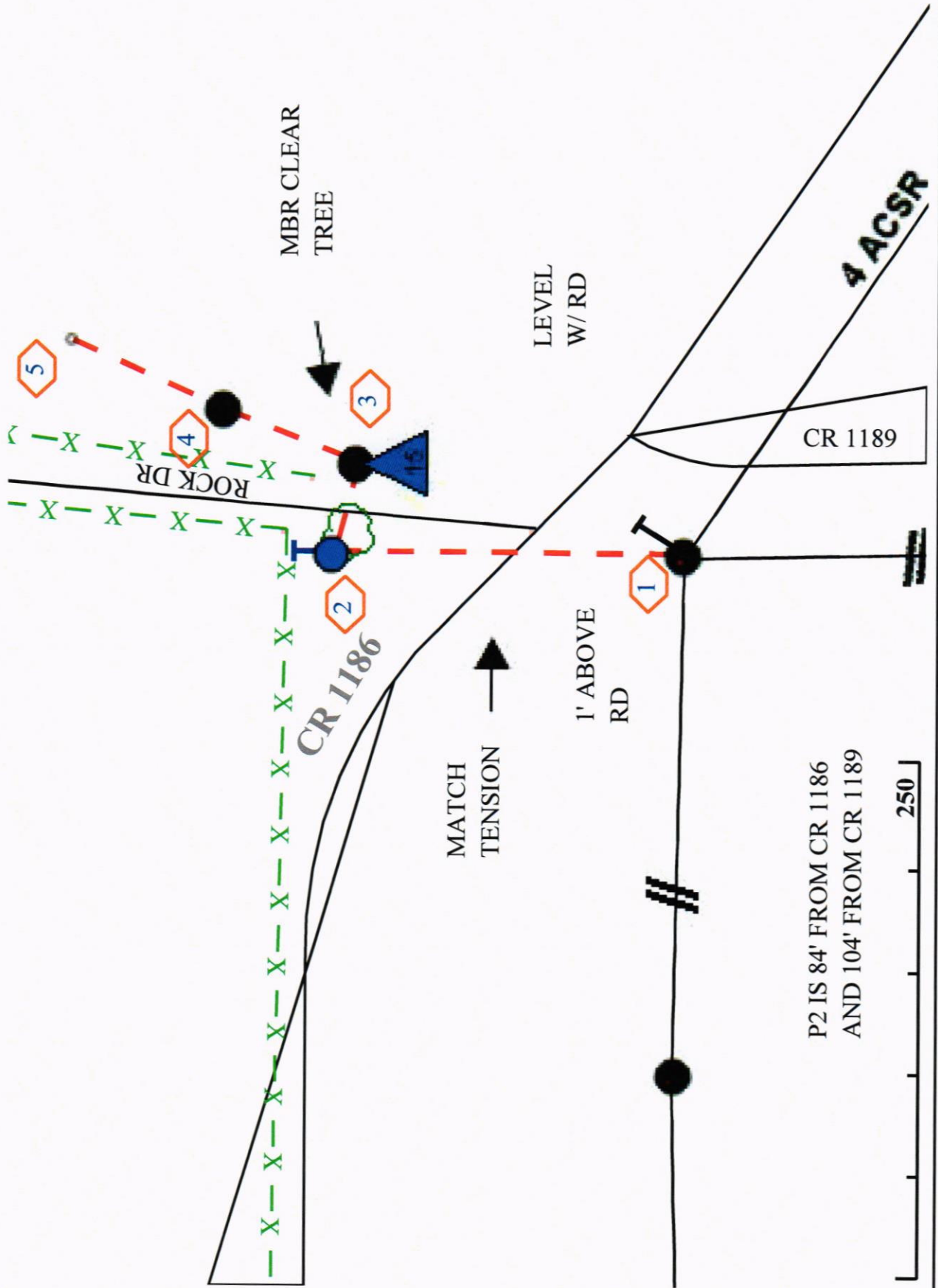
FARMERS ELECTRIC COOPERATIVE

SO#1604002554-ARNOLD, BENJAMIN



Wed Feb 8 2017 03:31:29 PM.

7.2KV



P2 IS 84' FROM CR 1186
AND 104' FROM CR 1189

250